



MONTHLY MEMBERSHIP PROGRESS REPORT

District 5M 11

Results as of: 4/30/2015

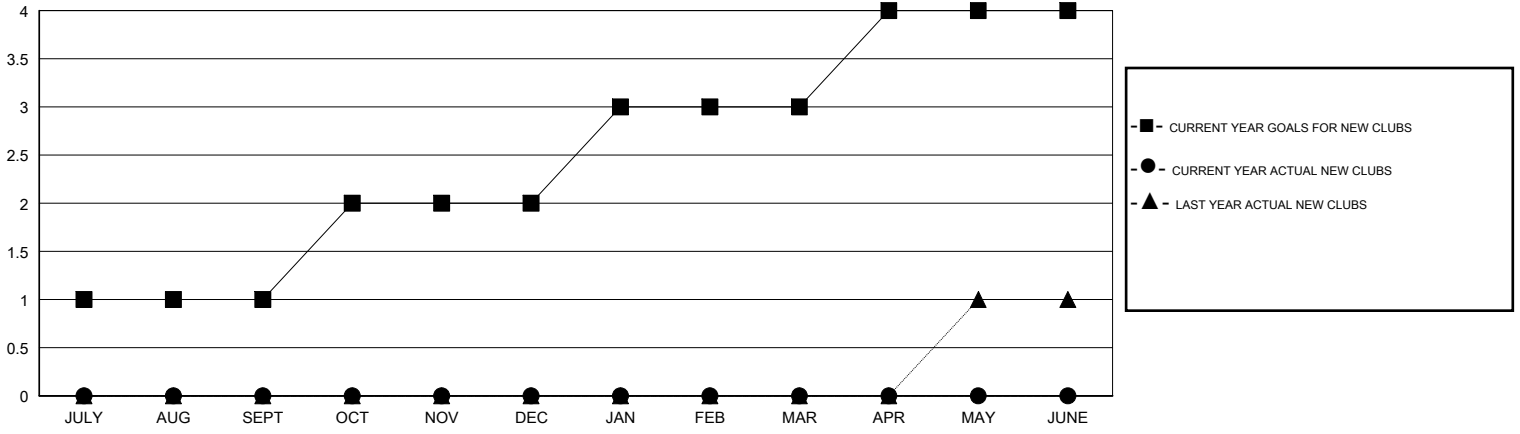
GMT: DENNIS STEVENSON

LOCATION MINNESOTA

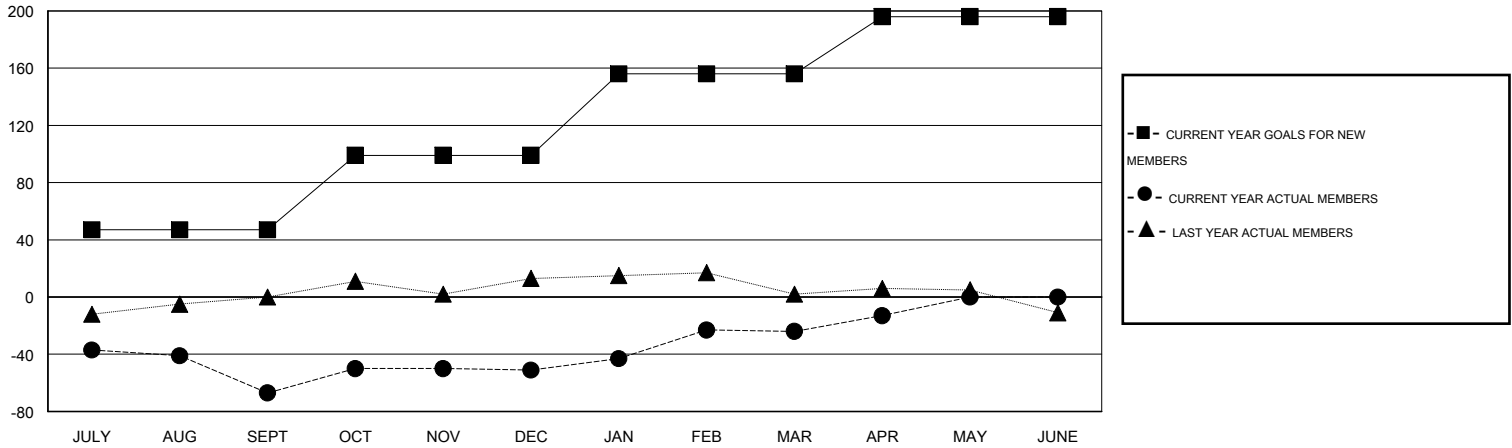
GMT CA 2

Clubs					Members				
RESULTS FOR 2014-2015					RESULTS FOR 2014-2015				
QUARTER	NEW CLUB GOAL	NEW CLUBS	DROPPED CLUBS	NET GAIN/LOSS	QUARTER	NEW MEMBER GOAL	CHARTER AND NEW MEMBERS ADDED	DROPPED MEMBERS	NET GAIN/LOSS
JULY/AUG/SEPT	1	0	0	0	JULY/AUG/SEPT	47	14	81	-67
OCT/NOV/DEC	1	0	0	0	OCT/NOV/DEC	52	52	36	16
JAN/FEB/MAR	1	0	0	0	JAN/FEB/MAR	57	56	29	27
APR/MAY/JUNE	1	0	0	0	APR/MAY/JUNE	40	18	7	11

GOALS AND ACTUAL NEW CLUBS CUMULATIVE



GOALS AND ACTUAL MEMBERS CUMULATIVE



DROPPED CLUBS: 0	42 CLUBS OF 66 ADDED 1 OR MORE NEW MEMBERS	GENDER DISTRIBUTION
		MALE 1,449 (74.88%)
		FEMALE 486 (25.12%)
DROPPED MEMBERS	CLICK HERE FOR HEALTH ASSESSMENT DATA	FAMILY UNIT MEMBERS 360
DECEASED 16		HEAD OF HOUSEHOLD 176
CLUB CANCELLED 0		NON-HEAD OF HOUSEHOLD 184
OTHER 137		
TOTAL 153		